

Menu Overview

Menu Structure

- User setting ○ Advanced Setting ○ Heating Schedule
- WiFi Setting ○ Thermostat Info
- User setting
- Date ○ Time ○ Unit
- Display Brightness ○ Screen Saver ○ Child Lock
- Advanced Setting
- Temperature Control ○ Room Sensor Calibration ○ Floor Sensor Calibration
- Floor Protection ○ Adaptive Function ○ Switch Differential
- Factory Reset
- Heating Schedule
- View / Edit Schedule ○ Reset to Factory Schedule

General Operation

Congratulations on the purchase of your new WiFi Touch Thermostat. We hope that you will enjoy the ease of use offered by the touch screen and the intuitively designed user interface. You can program the thermostat in any way you would like with the options provided under Heating Schedule and User Settings.

Technical Data

Supply: 120-240Vac 50/60 Hz	Standby power: <2W
Load: 16A(electric heating) 3A(water heating)	IP rating: IP21
Temperature range: +5 to +60°C	Wire diameter: ≤2.5mm²

Display Symbols

The function of the buttons and symbols shown on the home screen varies according to the chosen operating mode.



Scheduled Operation home screen:

1. Program Mode
2. Time
3. Day
4. Current target temperature/setpoint
5. Tap here to increase the temperature
6. Tap here to decrease the temperature
7. Heating Schedule
8. Heating Schedule
9. Heating is activated
10. Hold
11. Menu

Icons

Icon	Meaning	Icon	Meaning	Icon	Meaning
	Hold		WiFi		Room Sensor Calibration
	Program Mode		Date		Floor Sensor Calibration
	Menu		Time		Floor Protection
	User Settings		Unit		Adaptive Function
	Advanced Settings		Daylight Saving		Switch Differential
	Heating Schedule		Screen Saver		Heating is activated
	Factory Reset		Child Lock		Heating is activated with adaptive mode
	Thermostat Info		Temperature Control		

User Settings

1 User Settings

Under User Settings, you can change the settings of the following items.

Note: if an item is grayed out, it is not available due to other settings.

- Date
- Time
- Unit
- Screen Saver
- Child Lock
- Display Brightness

2 Date

This screen allows you to change the date.

- Tap the “Arrow Up” or “Arrow Down” button to set the date, month, and year.
- Confirm your choice with “Save” or discard it with “Cancel”.

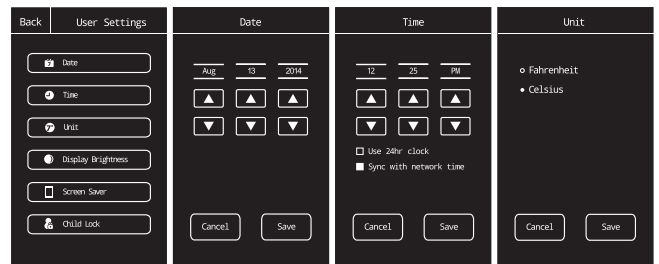
3 Time

This screen allows you to change the time, which is used by the clock to control your heating schedule.

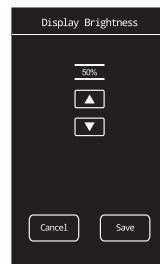
- Tap the “Arrow Up” or “Arrow Down” button to set the hours, minutes, and AM/PM.
- Tap the time format that you prefer.
 - Use 24hr clock
 - Sync with network time
- Confirm your choice with “Save” or discard it with “Cancel”.

4 Unit

- Tap the unit that you prefer:
 - Celsius
 - Fahrenheit.
- Confirm your choice with “Save” or discard it with “Cancel”.



User Settings



1 Display Brightness

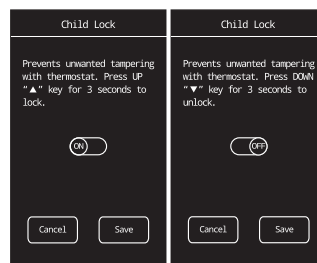
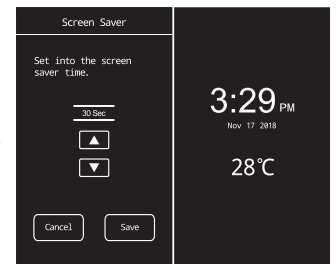
This option allows you to change the brightness of the display.

- Select one of the five levels of brightness using the “Arrow Up” or “Arrow Down” button.
- Confirm your choice with “Save” or discard it with “Cancel”.

2 Screen Saver

This screen allows you to select the time delay of the Screen Saver.

- Confirm your choice with “Save” or discard it with “Cancel”.

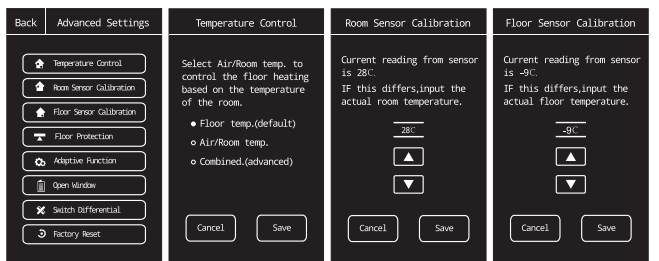


3 Child Lock

The child lock prevents children and others from tampering with the thermostat and changing any of its settings.

- Tap the “OFF/ON” button to the setting that you prefer.
- Confirm your choice with “Save” or discard it with “Cancel”.

Advanced Settings



1 Advanced Settings

Under Advanced Settings, you can change the settings of the following items.

Note: if an item is grayed out, it is not available due to other settings.

- Temperature Control
- Floor Sensor Calibration
- Adaptive Function
- Switch Differential
- Room Sensor Calibration
- Floor Protection
- Factory Reset

3 Room Sensor Calibration

This option allows you to calibrate the room sensor.

- Use the "Arrow Up" or "Arrow Down" button to set the room temperature actually measured.
- Confirm that you want to calibrate the sensor with "Save" or discard it with "Cancel". If the temperature is confirmed with "Cancel", a confirmation screen will be displayed briefly.

2 Temperature Control

This screen allows you to choose which sensor is used to control the heating system

- Floor: With this setting, the floor sensor controls the heating system.
- Room/Floor Protection: With this setting, the room sensor built into the thermostat controls the heating system while the floor sensor limits heating according to the temperature limits set under Menu/Advanced Settings/Floor Protection.
- Room: With this setting, the room sensor built into the thermostat controls the heating system.

Note! Floor Protection is not active while using the Sensor Application "Room".

4 Floor Sensor Calibration

This option allows you to calibrate the floor sensor.

- Use the "Arrow Up" or "Arrow Down" button to set the floor temperature actually measured.
- Confirm that you want to calibrate the sensor with "Save" or discard it with "Cancel".

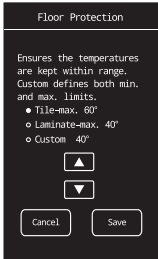
Advanced Settings

1 Floor Protection

This option ensures that the floor temperatures are kept within range.

- Choose the floor protection which is relevant for your floor.
- If Custom is chosen, you must define minimum and maximum temperatures for the floor.
- Use the "Arrow Up" or "Arrow Down" buttons to set the minimum and maximum temperatures.

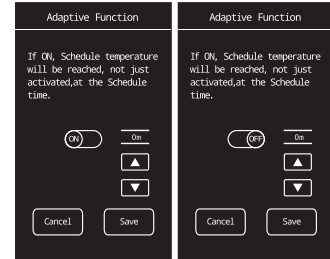
NOTE: If the maximum floor temperature is set too high, temperature sensitive floor types may be permanently damaged.



2 Adaptive Function

With this feature enabled, the room will already have reached the target/setpoint temperature at the beginning of a scheduled event.

- Tap the "OFF/ON" button to the setting that you prefer.
- Confirm your choice with "Save" or discard it with "Cancel".



Advanced Settings

1 Switch Differential

This option allows you to change the switch differential.

- Use the "Arrow Up" or "Arrow Down" button to set the switch differential range.

2 Factory Reset

This option allows you to restore the thermostat to factory settings. Note! This action cannot be undone, and all of your personal settings will be lost.

- Tap "Reset Thermostat" if you want to restore the factory settings.
- A confirmation screen will be displayed. Note! All personal settings will be lost.

3 Heating Schedule

The heating schedule allows you to control the temperature automatically according to a programmed schedule of your choice.

- Tap the "View/Edit Schedule" button to access
- the various schedule options. Tap the "Reset to Factory Settings" button if you want to restore the factory settings.

4 Heating Schedule 1/2

This screen consists of a list of four events. The first event is the time you want your floor heating to turn on in the morning. The second will turn it off in the morning. The third and fourth events will control the evening timing.

Press the 5+2 button to toggle between programming each day separately or having weekdays as one setting and weekends at different times. Press the right arrow to change the day(s) you are programming.



Advanced Settings

1 Heating Schedule 1/2

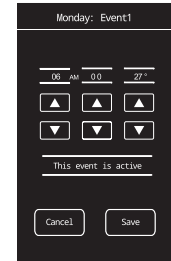
- To change the start time for the event, tap the "Arrow Up" and "Arrow Down" buttons.
- To change the temperature for the event, tap the "Arrow Up" and "Arrow Down" buttons.
- To toggle between the event being active or inactive, tap the "The event is active" or "The event is inactive" button. The text shown on the button reflects the current activity status of the event.



2 Hold Operation Adjust

Allows you to maintain the displayed target temperature/setpoint or a Manual Override for longer than just to the next event change or for a specific time period. You can use the "Hold" options to specify the length of time the displayed target temperature/setpoint should last. When the set time period has elapsed, the thermostat will automatically revert to Scheduled Operation.

- Permanent hold
- Holiday model



WiFi Connection

Step 1: Scan the QR code through a browser or download the APP from the major application markets to install it. Simply search for, "Smart Life". You can also control your Hotwire Floor Heating via Your Google home or Amazon Alexa. Once the app is downloaded and connected simply press relevant button. There are full step through videos on our YouTube channel.



Step 2: Click the APP, log in through the registered phone number or email address.

Step 3: Click Add Device on the bottom of the screen. **Step 4:** Check the thermostat WiFi icon is flashing. If not, operate the thermostat according to the APP tips until it flashes quickly. Click the "Make sure WiFi is flashing quickly" button.

Step 5: Fill in the phone with the WiFi network password, click "confirm".



Step 6: Click "Done" after the APP is connected to the thermostat successfully.

Step 7: You can check the real-time temperature, and make some basic adjustments on the main screen.



Mounting steps

- Loosen screw at the bottom and remove faceplate. Do not attempt to remove the screw completely.
- The floor sensor must not come in contact with electrical wires in the wall and must be routed outside the electrical box.
- Connections on power base. Place small strip of electrical tape over terminals to prevent contact with ground wire.
- Thread floor sensor through hole in the power base. Push electrical wires to the back of electrical box.
- Push power base into electrical box. Secure power base to wall.
- Floor Sensor (no polarity). Make sensor connections. Remount faceplate.